




School Attendance

GUSD District Advisory Meeting
January 11, 2024



School Attendance is Compulsory!



Attendance in school, is **REQUIRED** by law:

- Education Code §48200 requires all children between the ages of 6 and 18 to attend a full-time education program as designated by the governing board of the school district in which the parent or legal guardian resides.
 - Education Code §48260(a) defines a “truant” as a student who three times during the school year either misses more than 30 minutes of instruction or is absent from school for three full days without a valid excuse.
 - Because society recognizes the importance of regular school attendance, Education Code §48205 defines when a student may be validly excused from school.
- 



GUSD Parent/Student Handbook

Attendance: Absences and Tardiness

- AR 5113 Students: Absences and Excuses
 - AR 5113.1 Students: Chronic Absence and Truancy
 - BP 5113 Students: Absences and Excuses
 - BP 5113.1 Students: Chronic Absence and Truancy
-
- California State Law requires that ALL student absences from school be verified on a daily basis. When your child is absent from school, you are required to notify us daily as to the specific reason. You may call, write a note, send an email, send a ParentSquare message, or come in person to excuse an absence. **The District receives funds only for students who attend school or who are legally excused.**
- 
- 



Our GUSD Data



From Schoolzilla

CHRONIC ABSENCES - Year to Date:

20.9%

747 of 3,580 students chronically absent

** Chronically absent is defined as missing 10% or more of the school year

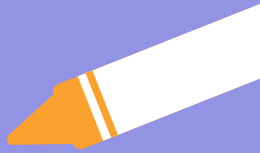
District Goal is < 5%





**10% =
chronic**

**If a student reaches a threshold of
10% absences
(excused AND/OR unexcused)
Increase levels of school supports
are initiated.**





Family Attendance Survey - Activity



In a small group you will discuss and divide the questions on the questionnaire into categories:

- Family Stressors (food/shelter/clothing/childcare)
- Student Health
- Perceptions around the Importance of School Attendance
- Student/School Connections
- Positive/Negative School Experiences





Family Attendance Survey - Activity Part 2

- After your group has sorted the questions into groups, write the question number on your post-its and place on the chart.
 - You may place a duplicate of a number if you think the question belongs in more than one category.
- As a group we will determine if some areas are over or under represented with questions.





Family Attendance Survey - Activity Part 3

- Are there questions that are:
 - redundant?
 - Intrusive?
 - Need to be reworded to be better understood?
- Are there any additional questions that may help us get a better understanding of why children attend school regularly, or why children may be chronically absent.



ATTEND TODAY, ACHIEVE TOMORROW

© Rectangular Sign

GOOD SCHOOL ATTENDANCE MEANS...



ELEMENTARY STUDENTS

read well by the end of third grade



MIDDLE SCHOOLERS

pass important courses



HIGH SCHOOLERS

stay on track for graduation



COLLEGE STUDENTS

earn their degrees



WORKERS

succeed in their jobs

Too many absences—excused or unexcused—can keep students from succeeding in school and in life. How many are too many? 10% of the school year—that's 18 missed days or 2 days a month—can knock students off track.



Attendance Works

Advancing Student Success By Reducing Chronic Absence

www.attendanceworks.org



Thanks!

We will share our results !

CREDITS: This presentation template was created by **Slidesgo**, including icons by **Flaticon**, infographics & images by **Freepik**

Please keep this slide for attribution